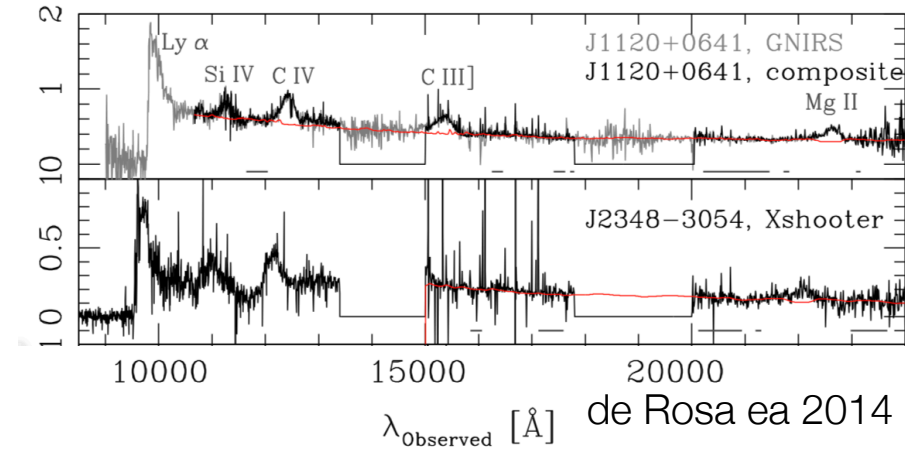
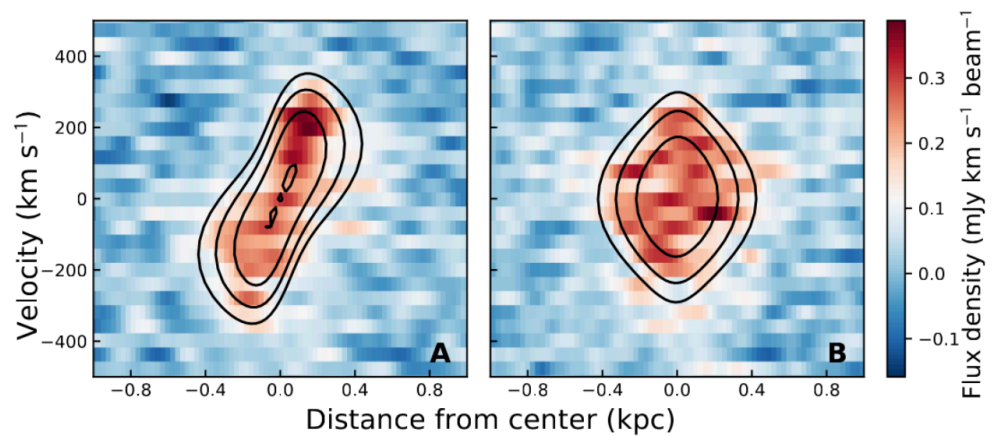
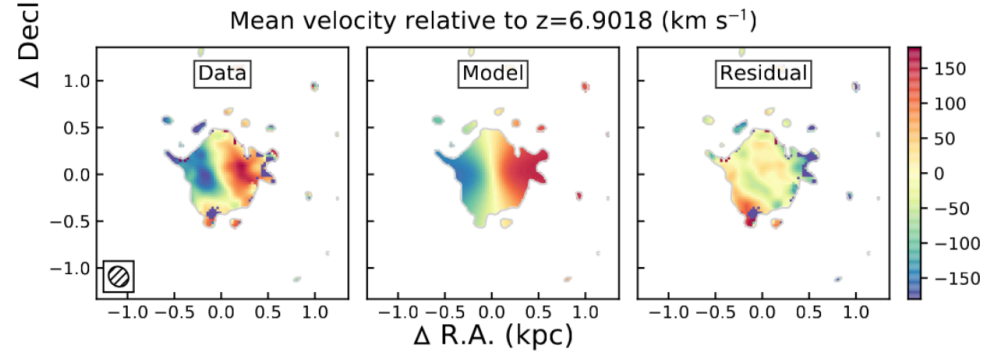
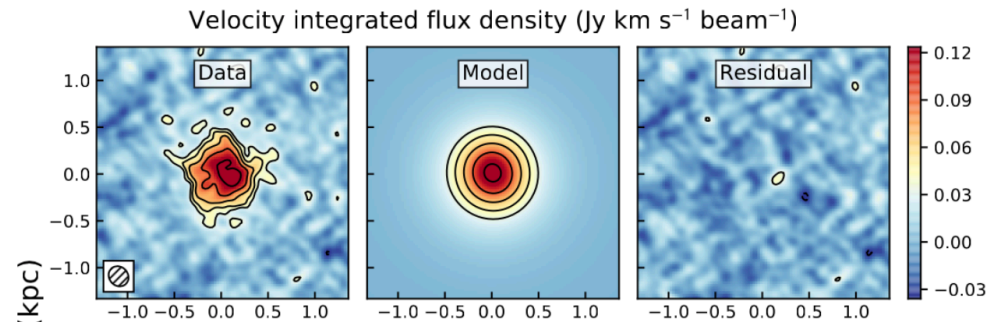


quasar host galaxy at  $z=6.9$ , 25 hour ALMA integration, 200pc resolution (0.035")

black hole mass:  $2 \times 10^9 M_{\text{sun}}$



modeling consistent with disk rotation



where is the kinematical evidence for the  $2 \times 10^9 M_{\text{sun}}$  black hole?

### ALMA observations

