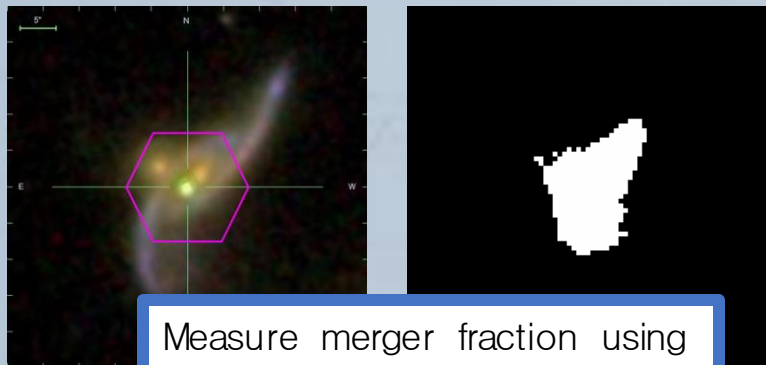


Kate Gould | (Incoming) PhD Student

MPhys | University of St Andrews, Scotland

Morphologies of  $z < 0.1$  post-starburst galaxies

*Supervisor: Dr Vivienne Wild*

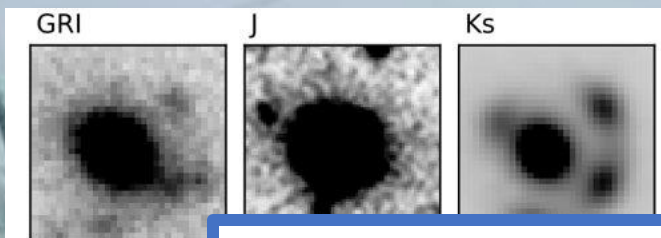


Measure merger fraction using shape asymmetry

University of Oxford

Searching for strong lensing of  $z > 2$  quiescent galaxies

*Supervisor: Dr Rebecca Bowler*



Algorithm tested using only known source (Muzzin+, 2013)

PhD | DAWN/NBI

No set plan yet, but hopefully something to do with massive quiescent galaxies/lensing/quenching



Various particle physics adventures (CERN, University of Manchester)